

# COMPANY PROFILE

Survey. Design. Build.



## PRO-ACTIVE ENGINEERING

Feasibility Studies | Coastal and Marine | Transportation  
Water Resources | Buildings



## We Are JEB

Established in 2018, **JEB Surveys and Engineering supports the development of infrastructure in Cambodia.** We combine our strong local knowledge with international engineering experience to deliver reliable results.

### Our Core Capabilities Include:

- Feasibility studies
- Topographic, bathymetric, geotechnical, and other specialized surveys
- Detailed design in coastal, transportation, structural, and geotechnical engineering
- Construction management and supervision

Our multidisciplinary engineering teams produce technical solutions that meet international standards and project requirements. We collaborate with lead international consultants and contractors on complex infrastructure projects.

As a trusted local partner for foreign firms, we provide detailed engineering design outsourcing, assist with Cambodian regulatory requirements, and offer on-the-ground experience to navigate local conditions effectively.

### A Cambodian French Affair

The story began in 2007 when Jeremy Berthelomeau, a French survey engineer, arrived in Cambodia to provide technical support for the renovation of the Angkor temples. After working in the Cambodian Railway Rehabilitation Project and also as an Engineering Consultant, he co-founded JEB Surveys and Engineering Co., Ltd. with a Cambodian civil engineer, Pheang Chanphirom. Their mission remains to provide the much needed technical support to infrastructure development projects in Cambodia.

### Local Firm, International Connections

Today, JEB is a team of 50+ engineers, technical experts, and specialists, from diverse backgrounds. As a proud local firm, we have developed a strong network of clients, architects, consultants, and contractors in Cambodia, enabling us to advise on local conditions and available services. We maintain close relationships with our international connections who are industry leaders in their specialties.

JEB is officially registered at the Ministry of Commerce of the Kingdom of Cambodia (No. 00033571) and holds licenses to provide engineering consultation services and small construction.

# 100+ Years of Combined Engineering Experience

---



## Mr. Jeremy Berthelomeau / Managing Director

Jeremy is a French engineer from the “**Ecole Superieure des Geometres et Topographes (part of ENSAM)**” with **21 years of experience** in the field of:

- Feasibility Studies, Topographic Surveys, and Soil Investigations
- Earthworks, Roads, Drainage, Irrigation System Design and Supervision
- Railway and Airfield Design and Supervision
- Industrial and Residential Zone Outdoor Design



## Mr. Pheang Chanphirom / Technical Director

Chanphirom is a licensed Cambodian engineer from the “**Institut de Technologie du Cambodge**” with **21 years of experience** in the field of:

- Hydrographic and Topographic Surveys
- Structural Design and Construction Management
- Earthworks, Roads, Bridge Design and Supervision
- Coastal Infrastructure Design and Supervision



## Mr. Prak Nhort / Quantity Survey & Civil Supervision

Nhort is a civil engineer from the “**Build Bright University**” in Phnom Penh with **28 years of experience** in rural development. He contributed to the demining of Cambodia with CMAC but also in Erythrea (East Africa) during his youth and afterwards works in many projects related to rural development in Cambodia including of health center, electricity line, railways and roads. Nhort, as a trained military medic, is also in charge of HSE.



## Mr. Renaud Groisy / Construction Manager

Renaud is a French project manager with a strong understanding of the local context and over **19 years of experience** in the field of:

- Construction Management: Earthworks, Coastal Infra, Buildings, Public Infra, Dry Ports
- Project Management: Tendering and Bidding, Procurement, Scheduling, Budgeting
- Construction Supervision: On-Site Contractor Supervision, Quality Control, Negotiation



## Mr. Robert-Jan van Hulst / Mechanical & Electrical Specialist

Robert-Jan has been managing extensive mechanical and electrical projects in the **Southeast Asian region for the past 20 years**. His M&E experience covers all:

- Emergency Intervention
- Design and Commissioning of Complex Industrial Systems
- Technical Solutions and Maintenance

# We Can Help You



## 01

### Prepare your project

We provide the best incoming data to your Architect or Project Consultant.

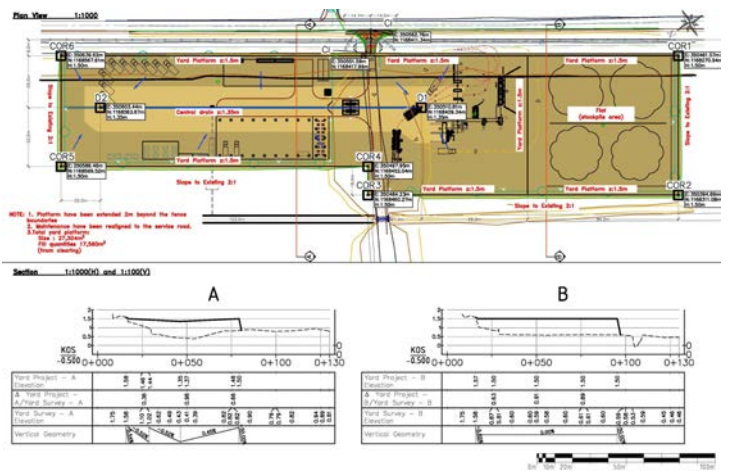
- Feasibility Studies
- Topographic & Hydrographic Surveys
- Soil Investigations
- Pavement Testing
- Remote Sensing
- Structural Analys

## 02

### Design your infrastructure

We deliver well-planned and accurate detailed engineering design, BoQs, specifications, and cost estimates that will save you time and money.

- Earthworks
- Roads, Bridges, Rail
- Drainage, Irrigation, Water Resources
- Buildings and Structures
- Coastal Infrastructure
- Airfields
- Dry Ports



## 03

### Build to the highest standard

Whether you are the Client, a Contractor, or a Consultant Engineer, our Management, Quality Control and On-Site Supervision brings value to your projects.

- Management and Supervision
- Geometric Verification
- Material Testing and Approvals
- Quality Assurance and Control
- MEP Commissioning
- Health, Safety, Social, Environment

# Our Clients, Friends, and Partners

---



# Our Expertise and Equipment

JEB stands ready to support your project with a diverse range of studies, surveys, analyses, and engineering expertise. With 50+ employees, local and international experience, and a proven record of success we continue to support the development of Cambodian infrastructure. Our project experience spans all sectors: Transportation, Buildings, Irrigation, Marine and Coastal, Energy, Environmental, and Mining. We work with SMEs, Governments, International Consultants, and Development Banks.



## Feasibility Studies

We conduct comprehensive feasibility studies for projects ranging from utility audits, socioeconomic surveys or full-blown technical and financial feasibility studies.

- Site Audits
- Socio-Economic Studies
- Community / Land Use Planning
- Site proximity to sensitive installations
- Environmental Assessments
- Social Surveys and Resettlement

## Topographic Surveys

JEB is capable of providing eight survey teams, each with specialized survey equipment and capable of working simultaneously:

- 8 x DGPS Antenna (SPECTRA 80 / KOLIDA)
- 3 x 1" Total Station (LEICA / SOKKIA)
- 3 x 2" Total Stations (SOKKIA)
- 4 x Digital Levels (SPECTRA)



## Hydrographic Surveys

We produce high-resolution mapping of underwater environments, including bathymetry, current profiles (Acoustic Doppler Current Profiler), and coastline characteristics. JEB is capable of providing two survey teams and vessels for working simultaneously. We employ 200kHz single-beam echo-sounders, multi-beam echo-sounders, two types of ADCP, and side-scanning sonar imaging.



## LiDAR & Photogrammetry

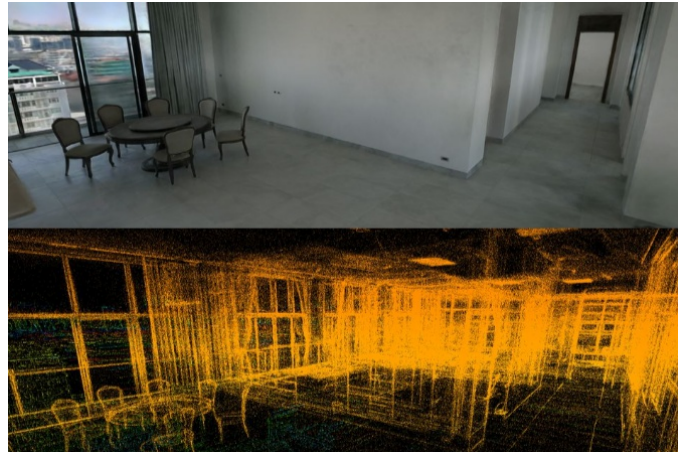
JEB is Cambodia's leading remote sensing provider delivering precise and accurate LiDAR and photogrammetric surveys in all types of terrain. JEB partners with ATGT, one of the biggest French survey firms, to process the data. Our LiDAR surveys provide guaranteed ground points (min 5 pts/m<sup>2</sup>), even in the densest vegetation.

- M300 RTK: industrial drone designed for surveying and inspection missions, capable of supporting multiple types of payloads
- CHC AA9, 500Hz, 300 pts/m<sup>2</sup>, 7 hectares/min
- Genius 16, 300Hz, 80 pts/m<sup>2</sup>, 3.5 hectares/min
- Zenmuse P1, 45MP, capable of less than 1 cm/px resolution
- Phantom 4 RTK Pro, 20MP, capable of 2 cm/px resolution
- Mavic 2 Pro: For site visualization, inspections, and general photography
- D-RTK-2 Base Station: GNSS receiver providing real-time, centimeter-level, differential correction data to our drone fleet and supporting all major satellite systems (GPS, GLONASS, Galileo, and BeiDou)

## SLAM Scanning

We generate highly accurate models and immersive virtual walkthroughs using simultaneous localization and mapping (SLAM) technology. SLAM produces dense, accurate, colored point clouds and is particularly useful for ground-based three dimensional scanning.

We use SLAM for mapping underground and indoor areas (mines, indoor stockpiles, caves), facility management (trenches, tunnels, digital twins), and construction (as-built, progress tracking).



## As-Built Surveys

Our teams conduct post-construction surveys that document the exact dimensions, positions, and elevations of existing structures and infrastructure.

As-built surveys often take place when:

- Documentation is missing
- Structural issues have occurred
- Planning renovations and retrofitting

## Soil Investigations, Groundwater Studies, Laboratory Testing

JEB provides in-situ investigations and laboratory testing services:

**Borehole Drilling:** Deployment of XY drilling rigs for Standard Penetration Testing (SPT) and the collection of disturbed and undisturbed soil samples. Specialized sampling techniques include mazier and piston samplers, alongside double-tube rock coring for high-quality core recovery.

**CPTu Testing:** Real-time measurement of soil stratigraphy, SPT, and physical parameters. Our equipment is capable of investigating depths up to 40 meters, providing fast, reliable data that is often more cost-effective than borehole drilling and laboratory testing.

All procedures adhere to ASTM standards. We conduct regular inspections of our partner soil testing laboratories to ensure quality control and compliance standards are maintained.

We use the Geomative GD-10 resistivity system, equipped with a 60-electrode switcher for 2D and 3D imaging. Able to detect the groundwater table at depths of 300 meters using Schlumberger or Wenner configurations. Assisted by external international consultants for advanced processing and analytics.

We perform well assessments (drawdown and recovery, constant-rate, step-drawdown) using submersible pumps, water level meters, and data loggers for obtaining transmissivity, storativity, and hydraulic parameters.



## Pavement Testing

Our teams conduct pavement testing with the following equipment:

- Plate and Dial Gauges for Plate Bearing and Deflection Testing
- Troxler (Nuclear Density Gauge)
- Sand Cone Testing
- Field Density and Macro-Texture Depth Measure Equipment
- Dynamic Cone Penetrometer (TRL and Light Model)
- Thermometers, Carpet Test Tray and Lab Weight Scales
- Pavement Coring Machines for Sample Extraction





## Structural Assessment

Our teams assess the existing conditions of structures (steel, concrete, etc.). The scope of assessments depends on the structure and may include geometric verification, crack monitoring, foundation excavation, concrete coring, rebar verification, concrete carbonation, and other methods.

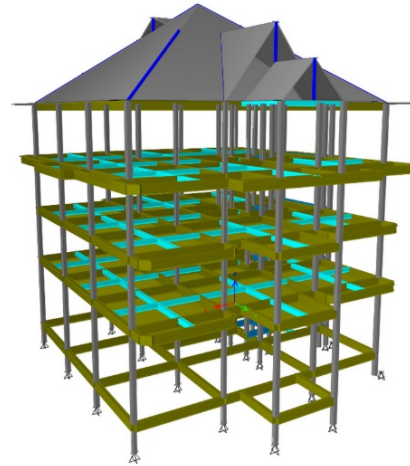
- Sclerometer and Ultra-Sonic Pulse Velocity (Concrete strength, voids)
- Destructive Testing: Concrete chipping, concrete coring

## Structural Analysis

After on-site assessments, our structural engineers perform an analysis of the structure in its entirety. We model the structure, calculate and apply appropriate dead and live loads and determine if the structure supports the planned capacity requirements.

In cases where it does not, we develop detailed structural strengthening designs.

All of our analysis adhere to international and local standards. Our reports are endorsed by a Professional Structural Engineer.



## MEP Testing & Commissioning

We perform MEP testing and commissioning services to identify, troubleshoot, and resolve any potential issues:

- Earth Resistivity for grounding and earthing design
- Insulation Testing
- Hipot Testing in brackets up to 5kva
- Power Quality Monitoring
- Thermal Imaging
- pHORP Measurement
- Liquid Flow and Pressure Measurement
- Micro Ohm Measurements

## Environmental Monitoring

JEB offers a variety of environmental monitoring services for development and construction projects.

We provide settlement and displacement monitoring, vibration monitoring, noise monitoring, piezometer monitoring, inclinometer, and wave / current monitoring.

We also conduct air and water quality monitoring and soil and groundwater chemical and property testing.



## Health, Safety, Security, and Environmental Management

JEB is dedicated to promoting workplace safety, environmental responsibility, and operational excellence.

Our team provides tailored Health, Safety, and Environment (HSE) solutions to help organizations protect their people, assets, and reputation across all their operations.

- **Job Safety Analysis (JSA) :** Systematically identifying potential hazards in specific tasks, evaluating risks, and recommending preventive measures to ensure every job is carried out safely and responsibly.
- **Risk Assessment :** Comprehensive evaluation of workplace hazards, exposure levels, and operational risks, followed by tailored strategies to minimize incidents and maintain regulatory compliance.
- **Safe System of Work (SSoW) :** Developing clear, step-by-step procedures that guide employees in performing tasks safely, efficiently, and in line with industry best practices.
- **HSE Management System Implementation :** Designing, integrating, and maintaining

management systems that align with international standards, ensuring continuous improvement and sustainable safety performance across all operations.

- **Incident Investigation & Root Cause Analysis :** Conducting thorough investigations into workplace incidents, identifying underlying causes, and producing detailed reports with corrective actions to prevent recurrence.
- **Work Planning & Supervision :** Structured planning, scheduling, and oversight of activities to ensure safe execution, compliance with procedures, and effective resource management.
- **Team Management :** Building and leading safety-focused teams, fostering accountability, and promoting collaboration to achieve operational goals while maintaining high safety standards.
- **Training, Workshops & Toolbox Talks :** Delivering engaging and practical training sessions, interactive workshops, and regular toolbox talks to raise awareness, strengthen skills, and embed a proactive safety culture across the workforce.



## Construction Management and Supervision

JEB has a record of successfully completing complex public, commercial, and industrial construction projects. We always aim to build close relationships with clients and stakeholders, communicate clearly and transparently, and deliver comprehensive, cost-effective solutions from the initial studies until handover.

As Construction Manager (CM), JEB organizes the project kick-off meeting with the Client, Project Manager, and Contractors. During the kick-off meetings, we cover the project in its entirety: requirements, success metrics, work sequencing, scheduling, resources, constraints, and potential challenges and solutions. All information is recorded and distributed to ensure all parties are in full understanding and agreement.

Our CM team controls site organization, and considers all the different trades and work schedules to ensure effective communication and minimize friction points. We are present on-site to oversee progress and ensure quality standards are met. In addition to our construction manager, a site inspector is also on-site, full time, conducting regular inspections, supervising contractor work and quality, and submitting daily reports. Throughout the project, the CM is supported by our survey, structural, and MEP teams.

The team holds weekly contractor meetings to check the work progress, issues encountered, remedial actions and to share any recent developments. We deliver clear project status reports with activities performed, procurement statuses, and proper work and safety methods.

Throughout the project, JEB is the central point for all involved parties: Client, Project Manager, Contractors, etc. for document submissions and approvals. We maintain transparent communication with the Client Team to provide updates on schedules and timelines, budget impacts, resources, and safety.

### Key Documents:

- Material Approval Requests (MAR)
- Shop Drawings (SDW)
- Request for Information (RFI)
- Request for Approval (RFA)
- Construction Plans
- Method Statements
- Insurance, HSE Plans, Equipment and Staff Lists
- Inspection Lists and Work Quality
- Work Progress, Variations, Additional Work
- Three-Week Look-Ahead Schedules



# Our Featured Projects

## ADB TA-6983-1 | Cambodia Solid Waste Management | Dangkor Landfill Studies

**Location:** Dangkor Landfill, Phnom Penh, Cambodia

**Year:** 2024

**Client:** Asian Development Bank (ADB)

We were approached by the Asian Development Bank for a Technical Assistance project to study the Phnom Penh's main landfill: Dangkor Landfill. The project objective was to determine whether methane extraction or incineration was the optimal method of waste reuse.

Our first step was to calculate the volume of waste, done through an aerial LiDAR survey and historical land analysis. Then came the establishment of gas wells to enable the extraction and analysis of gas composition. To do so, we drilled boreholes into the waste and installed sealable casing to prevent negative environmental effects. We built a custom gas extraction and testing device to determine the flow rates and composition of the landfill gases. Finally, a waste audit was conducted to understand the general composition of waste in the landfill. The project objective was successfully completed by compiling and analyzing all of this data.



**Keywords:** Consulting, Feasibility Study, Environmental Study, Volumetric Calculations, Gas Testing

# WAT4CAM | Water Resources Management and Agro-Ecological Transition for Cambodia Programme

**Location:** Battambang, Preah Vihear, and Kampong Thom, Cambodia

**Year:** 2025 - Ongoing

**Client:** Société du Canal de Provence (SCP)

As a part of the WAT4CAM Project, under Société du Canal de Provence (SCP) and for the Ministry of Water Resources and Management (MoWRAM), we are currently supervising the construction of three major irrigation schemes positioned in Battambang, Preah Vihear, and Kampong Thom provinces. A fourth irrigation scheme is being added to the scope.

Our role in the project is significant, covering the supervision of nearly 100+ kilometers of infrastructure. To ensure the final quality of the canal scheme construction, our team consists of:

- A roving leadership team: Team Leader, Quantity Survey, and HSE
- Three full-time, on-site construction supervision teams
- A design team: Hydrologist, Irrigation Engineer, Draftsmen

Our team is verifying the built structures against drawings and technical specifications, controlling construction material quality through on-site testing and validation, and enforcing health, safety, and environmental protocols for all parties.



**Keywords:** Project Management, Design Reviews, Quantity Surveying, Construction Supervision, Irrigation

## ADB PROJECT: 53261-001 | Cambodia: Sustainable Coastal and Marine Fisheries Project

**Location:** Cambodia

**Year:** 2023 - Ongoing

**Client:** Ministry Of Agriculture, Forestry, and Fisheries (MAFF) | ADB

The Sustainable Coastal and Marine Fisheries Project began as a preparatory phase project. JEB participated in this phase under Landell Mills (lead consultant).

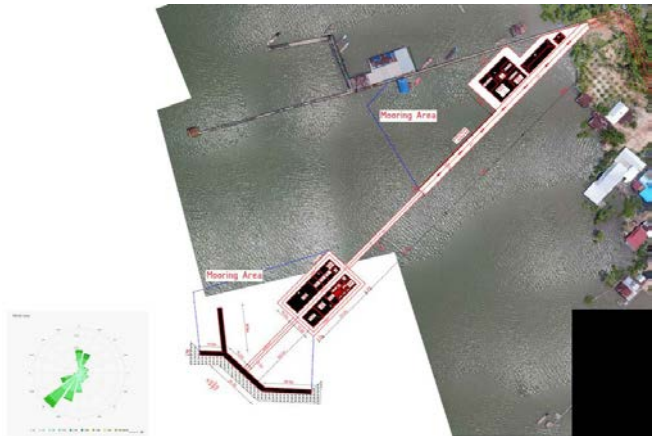
This was a \$1.23 million contract supporting the Ministry of Agriculture, Forestry, and Fisheries (MAFF) with strategic plan development for the sustainable management of coastal and marine resources in Cambodia's four coastal provinces of Kampot, Kep, Koh Kong, and Sihanoukville.

JEB, in the role of local technical expert was tasked with producing designs for fishery landing sites and fishery administration buildings.

To produce the designs, we conducted technical studies on nine (9) sites that consisted of site audits, topographic and bathymetric surveys, meteorological and hydrological studies, soil investigations, and existing building structural studies.

Following the surveys, we developed concept designs for six harbors and detailed engineering designs (structural, MP, and architectural) for three fishery administration buildings. Our designs fit the project constraints, met stakeholder needs, and were value-engineered to ensure construction costs would not exceed the established budget.

All designs were presented to the client and approved. Upon completion of the projects preparatory phase, the Cambodian government and ADB launched a bidding process to award a firm with the Lead Detailed Design Consultant (CS-03) scope of work. JEB and its dedicated project team of 17 experts were awarded the CS-03 package.



As the lead detailed engineering design consultants for the Sustainable Coastal and Marine Fisheries Project we directly support the Cambodian Government with the development of sustainable coastal and marine infrastructure across Cambodia's coastal provinces. Our work is performed in close collaboration with the Fisheries Administration under the Ministry of Agriculture, Forestry, and Fisheries.

The project is aimed at building 19 landing sites and associated buildings to enhance the local fishery industry, develop sustainable and climate-resilient infrastructure, and provide governmental assets for modern fishery monitoring. As the detailed design consultants, we are responsible for conducting technical feasibility studies, producing detailed engineering design, and submitting tendering packages for the construction phases.

### Associated Buildings:

- Landing sites, jeeties, breakwaters
- Mooring facilities
- Access Roads and Parking
- Local Markets
- Hygienic Storage, Freezing
- Production and Warehousing
- Child care areas
- Bunk rooms, sanitary, and cooking facilities



**Keywords:** *Engineering Consultants, Coastal Engineering, Feasibility Studies, Detailed Engineering Design, Structural Engineering, MEP Engineering, Architectural Design*

## Techo International Airport (KTI) - Airspace Survey and Survey Secondment

**Location:** Phnom Penh, Cambodia

**Year:** 2023 - 2025

**Client:** State Secretariat of Civil Aviation (SSCA) | Cambodia Airport Investment Company (CAIC)

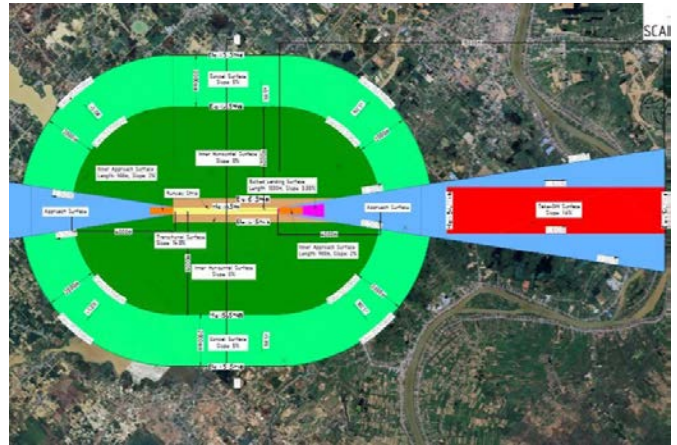
JEB provided survey teams to Cambodia Airport Investment Company (CAIC), Comin Khmer, CSCEC, and other contractors building Phnom Penh's new Techo International Airport (KTI) since early 2023.

Our survey teams provided the contractors and the project consultants with accurate geometric verification for all of the ongoing construction works. We touched nearly every part of the airport including the aerodrome reference points, runway, aprons, and terminal.

Additionally, we were contracted to conduct airspace surveys to map all potential obstacles and terrain within KTI's airspace. Two surveys were conducted, the first in 2023 and the second in 2024, due to increasing construction in anticipation of the new airport.

The scope of work was to design the obstacle and terrain limitation surfaces following national and international guidelines, conducting large-scale aerial surveys (LiDAR and Photogrammetry), acquiring large terrain raster data, transforming all data to ensure CRS consistency, and performing the final analysis of all combined data to map the obstacles in the airspace.

In total, we mapped approximately 6,362 square kilometers, produced a technical report, delivered data meeting ICAO standards, and presented the findings to government officials.



**Keywords:** Survey Consulting, Geographic Information Systems, LiDAR and Photogrammetry, National Transport Planning

# The Peppercorn Project – 45 KM2 Coastal and Marine Survey for Port Development

**Location:** Sihanoukville, Cambodia

**Year:** 2023 - 2024

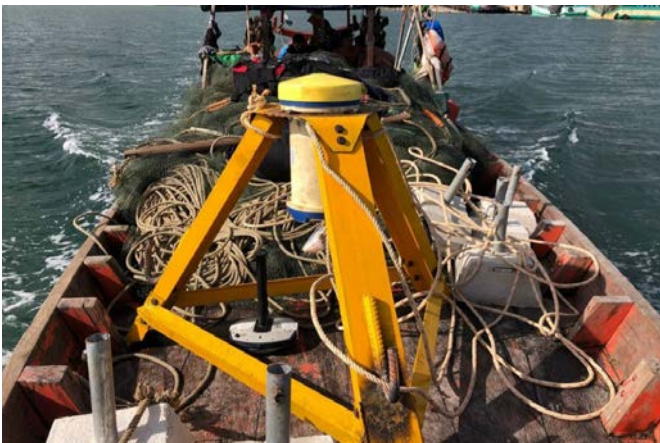
**Client:** Private

---

The Peppercorn Project was a large-scale hydrographic study near Sihanoukville for the purpose of planning the development of a large port. In total, we surveyed 45 square kilometers of the seabed, 100 hectares of land, collected and tested 22 seafloor soil samples, and deployed our Accoustic Doppler Current Profiler (ADCP) for 60 days.

Our seafloor and land survey data was carefully merged enabling the accurate mapping of the area's topography, including all slopes. Our ADCP deployments provided crucial information regarding waves, currents, and sedimentation rates. Finally, the seafloor soil sampling provided valuable information to aid in determining piling and foundations for the structure.

We successfully achieved our project objectives and provided our client with accurate maps and a detailed analysis of our fieldwork data, tidal data, and meteorological data.



**Keywords:** Coastal Engineering, Bathymetric Surveys, Engineering Consulting, Feasibility Study

# Our Transportation Projects

## Connect PNG Program - Detailed Engineering Design of 190+ KM of Rural Roads in Papua New Guinea (PNG)

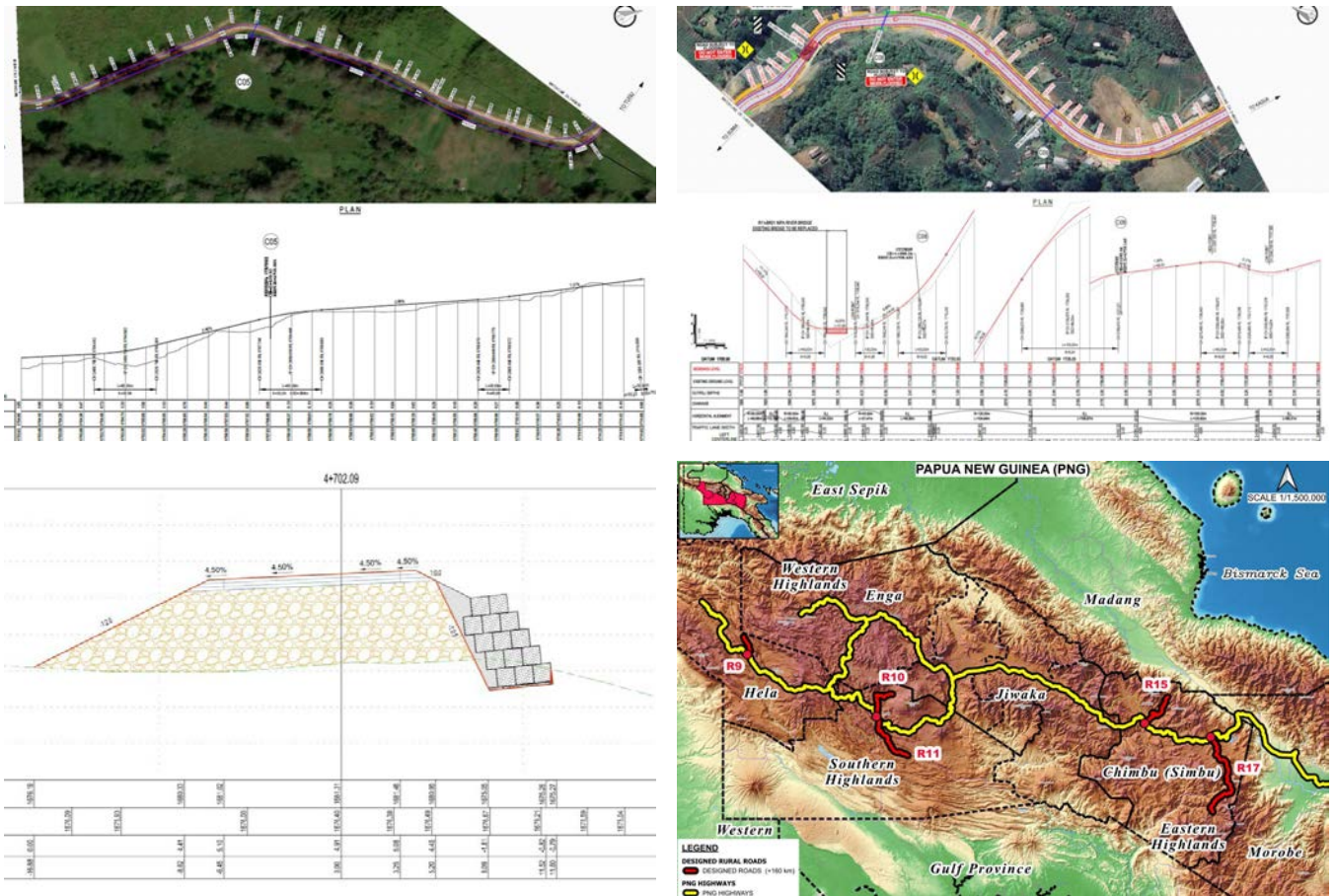
**Location:** Phnom Penh, Cambodia | PNG

**Year:** 2025

**Client:** EGIS | PNG Department of Works and Highways (DoWH)

The Connect PNG Program is a transformative infrastructure initiative aimed at revitalizing Papua New Guinea's road and bridge networks to drive socioeconomic development. JEB is participating in the Mountainous Roads Improvement and Resilient Program 2 – MRIRP2.

JEB collaborated with a large team of surveyors, hydrologists, and engineers to produce concept and detailed engineering designs of several road networks in Papua New Guinea (PNG). The firm delivered 190+ kilometers of concept and detailed engineering designs including, but not limited to, alignments, sight distances, earthworks, pavement, and materials, links to bridges and roads, drainage, and signals and safety.



**Keywords:** Road Design, Civil Engineering Design, Engineering Consulting

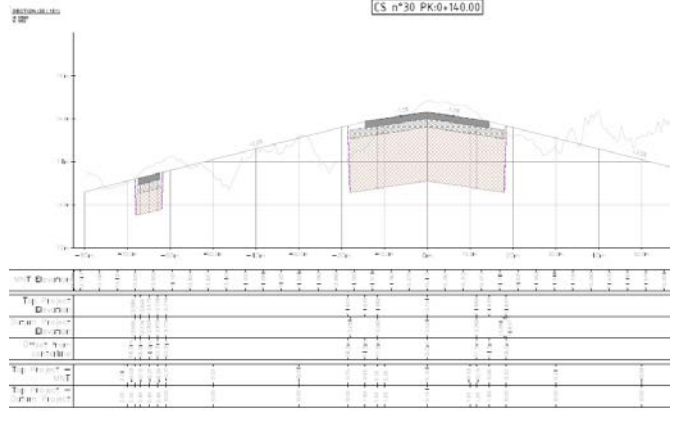
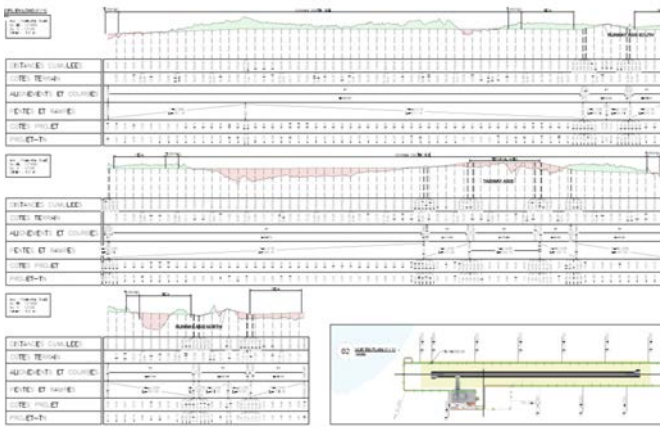
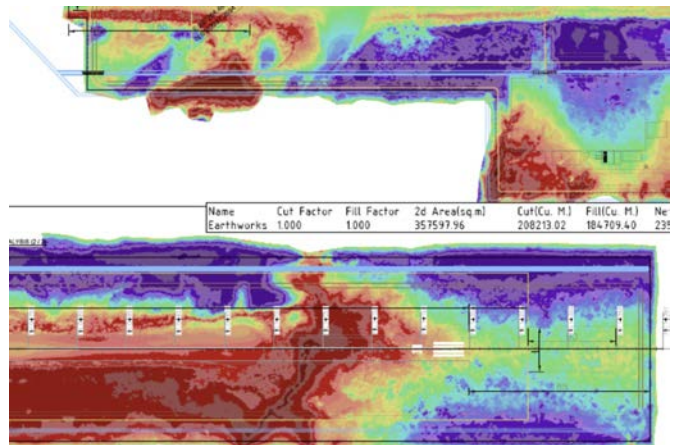
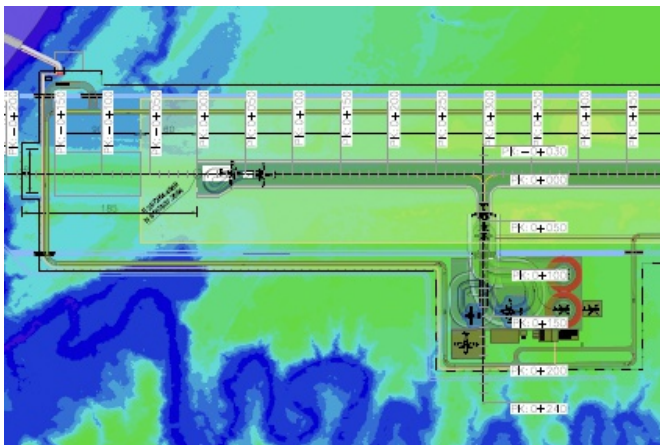
# Earthworks Design for Purari Airport

**Location:** Phnom Penh, Cambodia

**Year:** 2025

**Client:** EGIS

Jeb was tasked with analyzing and designing the earthwork levels and grading for the Purari Airport. We analyzed the digital terrain models of the site to determine cut and fill areas, developed site levels and grading according to the airport and international standards, calculated the material volumes, produced cost estimates. As a result, our Client received detailed maps and a report explaining the analysis and plan of work.



**Keywords:** Design Reviews, Volumetric Calculations, Earthworks, Airfield

# Sihanouk International Airport Runway Extension

**Location:** Sihanoukville, Cambodia

**Year:** 2020 - 2024

**Client:** Cambodia Airports

This was the largest infrastructure project in Cambodia in 2020. Sihanoukville International Airport was upgraded with an extension of 800 meter of runway, as well as a reinforcement of the existing runway structure to be able to receive class E aircraft. JEB was survey contractor for the project and provided the following services:

- Design and Supervise the construction of all temporary access roads needed for the project
- Preparation of the Existing Runway Repair, Reprofilling and Overlay phase shop drawings
- Preparation of the Shop-drawing on the extension, and the extension of the turnpads
- Manage the handing over Survey of the final level provided by the Earthworks Contractor
- Shop drawings, Set out and Supervise the construction of all Civil Works: manholes, ducting, airfield lightings..
- Provide set out and survey to the contractor at all time to reprofile and built the runway to the correct geometry.
- Provide external laboratory test to check asphalt quality, base and sub-base material compliance to technical requirement and regulation.

This project continued into the terminal extension in 2023 through 2024. We served as the quality control team and had a team of ten (10) verifying geometry, checking earthworks, supervising construction methods and materials, and ensuring HSE was taken seriously.



**Keywords:** Project Management, Design Reviews, Quantity Surveying, Construction Supervision, Irrigation

## Other Notable Projects:

- Soil Investigation At Sihanouk International Airport, Sihanoukville, Cambodia, 2020
- Topography And Supervision For LRU Apron at PPIA, Phnom Penh, Cambodia, 2021
- Runway Emergency Repair at Phnom Penh International Airport, Phnom Penh, Cambodia, 2021
- Sihanoukville International Airport Taxiway Extension, Sihanoukville, Cambodia, 2022
- Survey Works Management For Cambodia Railway Rehabilitation, Cambodia, 2018
- Rural Road Improvement Program, Cambodia, 2015
- Earthwork Design of Yamoussokro Airfield in Ivory Coast, Phnom Penh, Cambodia, 2024
- Ta Khmau Bridge Technical Studies, Ta Khmau, Cambodia, 2023
- Prek Ho Bridge Technical Studies, Phnom Penh, Cambodia, 2024
- Private Bridge and Green Park, Battambang, Cambodia, 2023
- Airspace and Obstacle Survey Of Sihanoukville Airport, Sihanoukville, Cambodia, 2023
- TDS Airport Catering Building at KTI Airport, Phnom Penh, Cambodia, 2025



# Our Feasibility Study Projects

## Urbanland Chankiri Noreah Central Feasibility Studies

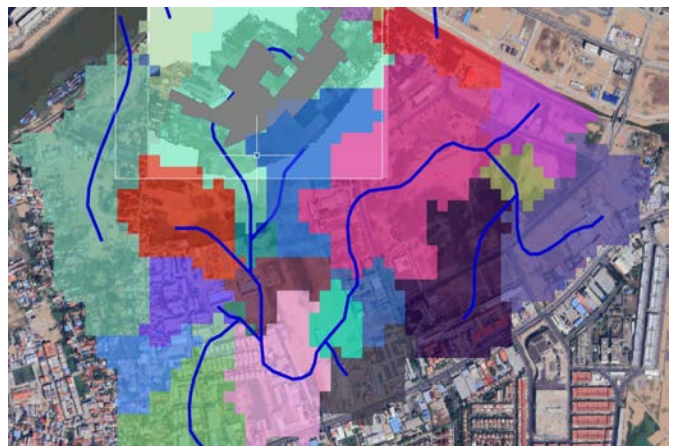
**Location:** Phnom Penh, Cambodia | PNG

**Year:** 2026

**Client:** Urbanland

JEB was contracted to conduct a full technical feasibility study for a planned borey and condo development in Phnom Penh city. We undertook field and office studies to deliver a comprehensive technical report containing:

- Site Audit
- Utility Study
- Transportation Study
- Topographic Survey
- Geotechnical Review
- Risk Management



**Keywords:** Feasibility Study, Flood Analysis, Utility Connections, Road Planning, Engineering Consulting, Urban

# The Jefferson Project - Solar Farm Feasibility Studies

**Location:** Kampong Thom, Cambodia

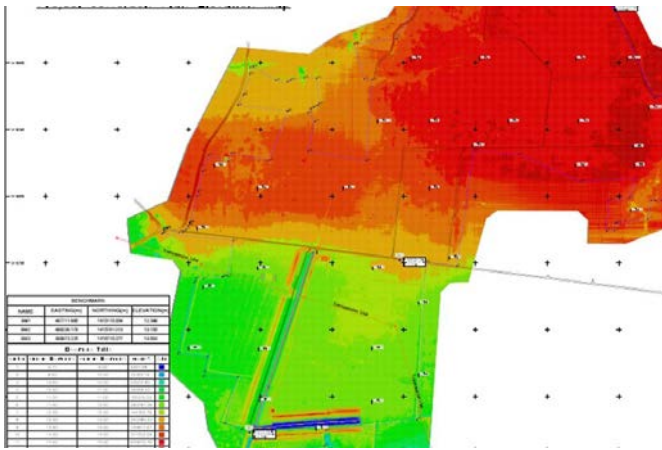
**Year:** 2024

**Client:** Private

JEB carried out a feasibility study for a potential solar farm development in Kampong Thom, Cambodia. One major concern upon our site reconnaissance was the risk of flooding due to the proximity of a large natural lake serving as a reservoir.

We surveyed the land using LiDAR and Photogrammetry and spot surveyed key areas in the surrounding area to obtain land and water levels. 40 soil tests using CPTu and 20 resistivity surveys to understand the electric conductivity of the ground were also conducted.

This data came together to produce detailed topographic maps of the site, watershed and catchment maps, a flood analysis, as well as recommendations for flood protection, foundations, and site layout.



**Keywords:** Feasibility, Engineering Consulting, Topographic Survey, Flood Analysis

# MEDLOG S.A. Dry Port Feasibility Studies

**Location:** Phnom Penh, Cambodia

**Year:** 2025

**Client:** MEDLOG S.A.

JEB carried out a feasibility study for a potential dry port complex development in Phnom Penh, Cambodia. We surveyed the land using LiDAR and Photogrammetry and spot surveyed key areas in the surrounding area to obtain land and water levels. Soil tests were conducted using CPTu and Plate Bearing Tests.

One major concern upon our site reconnaissance was the environmental risk of polluted water near the targeted site. We provided additional support to our Client by launching chemical testing and providing them with the results and our recommendations.



**Keywords:** Feasibility, Engineering Consulting, Topographic Survey, Pavement Testing, Soil Investigation

## Other Notable Projects:

- Poipet Special Economic Zone Feasibility Studies and Civil Design, Poipet, Cambodia, 2015
- Arup Green SEZ Feasibility Study, Kandal, Cambodia, 2026
- Immersive Angkor Feasibility Study and Earthwork Supervision, Siem Reap, Cambodia, 2025
- Holiday Palace Hotel Group Tidal Survey and Feasibility Study, Sihanoukville, Cambodia, 2023
- Environmental Assessment for Koh Norea Total Energies Station, Phnom Penh, Cambodia, 2025
- DPNV Resort and Park Feasibility Study, Kampong Thom, Cambodia, 2023
- Christian Church Feasibility and EIA, Siem Reap, Cambodia, 2024
- TR Petroleum Oil Depot Feasibility and Masterplan Design, Sihanoukville, Cambodia, 2025



# Our Marine & Coastal Projects

## Private Ream Port + Helipad - Feasibility, Design, Supervision

**Location:** Ream, Cambodia

**Year:** 2023

**Client:** Private

A private client approached us in 2023 to build a private port along their coastal property. JEB conducted a technical study including topography, bathymetry, and hydrology (sedimentation, waves, and tides).

The survey area consisted of an area of approximately 11 hectares partially on land and partially underwater. From the data, modeling, and analysis, detailed 2D and 3D drawings of the location were produced enabling the design of the clients personal port and helipad.

The project construction was tendered, managed, and supervised by JEB.



**Keywords:** Marine Structure Design, Coastal Planning & Resiliency, Surveying Services, Tender and Site Supervision

# Korea-Mekong Survey Of Steung Treng and Kratie Rivers

**Location:** Steung Treng and Kratie, Cambodia

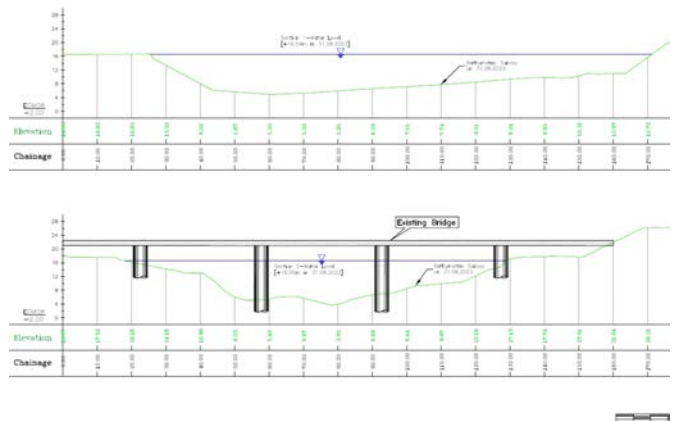
**Year:** 2024

**Client:** Asia Water Council (AWC) | KMCRC

JEB carried out surveys of the Mekong and direct branches of the Mekong river for the Asia Water Council (AWC) and the Korea-Mekong Water Resources Management Research Center (KMCRC) as part of the Integrated Water Resources Management and Enhancement of Climate Adaptability Project in Vulnerable Urban Areas of Mekong Basin project.

The studies took place in Kratie province and in Steung Treng Province. We used LiDAR to map the river embankments and bathymetry to capture the riverbed.

All data was merged to produce reliable and comprehensive maps of the Mekong riverbed and embankments.



**Keywords:** Topographic Survey, Bathymetry, Riverbank Slope Model

## Embankment Repairs and Rehabilitation

**Location:** Cambodia

**Year:** 2021 - 2024

**Client:** Varies

Many properties along the Mekong and Tonle Bassac rivers lose land yearly due to natural erosion. Happy Chandara School, owns one of such properties.

JEB designs and rehabilitates riverbanks through the use of geotextiles and earthworks such as toe protection, slope filling and protection, and galvanized gabions. These protective measures are long-term and minimize land losses and increase property value.

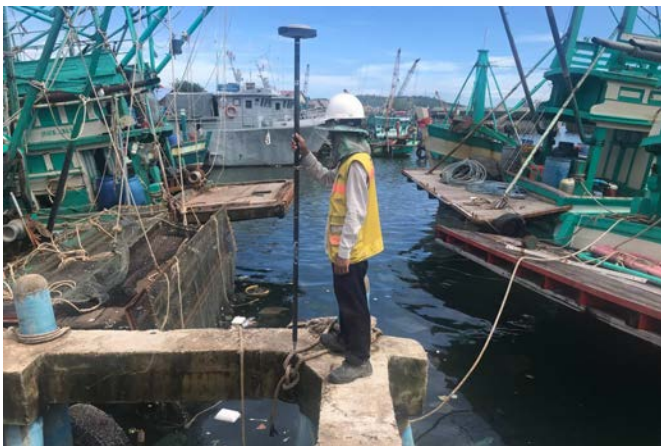
JEB manages the entire project scope from initial technical studies, to detailed engineering design, and finally the construction.



**Keywords:** *Earthworks, Embankment Rehabilitation, Construction Management*

## Other Notable Projects:

- Feasibility Studies and Design for a Private Kampot Port, Kampot, Cambodia, 2023
- Hydrological Studies for Wharf and Bridge Design, Solomon Islands, 2017
- Bathymetric Survey for PTT Offshore Tanker Terminal, Sihanoukville, Cambodia 2024
- Koh Krabey Water Intake Construction (Bathymetric and Soil Surveys), Sihanoukville, Cambodia, 2024
- Total Energies Khsom Oil Depot Bathymetry, Embankment Inspection, Sihanoukville, Cambodia, 2025
- Structural Strengthening Design of Koh Russei Jetty, Sihanoukville, Cambodia, 2025



# Our Water Resources Projects

## JICA - Preparatory Survey for Irrigation and Drainage Improvement Project

**Location:** Takeo and Banteay Meanchey, Cambodia

**Year:** 2025 - 2026

**Client:** JICA

Working under the Japan International Cooperation Agency (JICA), we conducted a large-scale topographic and hydrological survey covering hundreds of kilometers of rivers and irrigation canals, along with associated structures such as bridges and water gates, across two provinces.

We combined multiple survey methods and instruments to capture both accurate geometry, reliable water flows, and hydrological information. We employed specialized equipment including LiDAR, GNSS, total stations, echo-sounders, ADCP, and additional field tools as needed.



**Keywords:** *Topographic Survey, Hydrological Survey, ADCP, Irrigation*

## ADCP Deployments for the NR1 and Mekong River Bridge Project

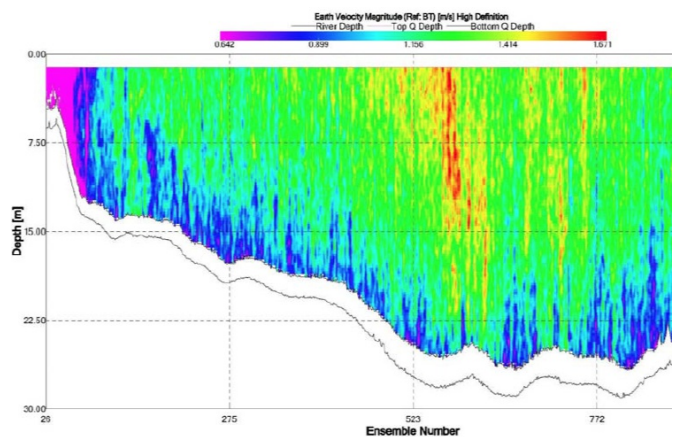
**Location:** Phnom Penh, Cambodia

**Year:** 2025

**Client:** ES Intl. Consultants | Oriental Consultants Global (OCG)

In support of the NR1 and Mekong River Bridge project, JEB conducted a phased ADCP survey. The first survey took place during the rain seasons to capture data when water levels and flows were high. The second survey took place at the beginning of the dry season.

Each survey consisted of 11 transects that were each surveyed four (4) times to average the results and provide reliable values. We used our Teledyne Workhorse II Sentinel 1200kHz ADCP equipped with Bottom Tracking to conduct the surveys.



**Keywords:** ADCP, Hydrological Survey, Bridge

## Flood Protection Masterplan for Sihanouk International Airport

**Location:** Sihanoukville, Cambodia

**Year:** 2023

**Client:** Cambodia Airports

JEB conducted LiDAR and Photogrammetric survey flights, bathymetric surveys, and piezometer water level monitoring at the Sihanouk International Airport and the surrounding area (~1,600 ha) to study the airport's flood protection and drainage capabilities. The resulting data was used to map the current drainage capabilities and design improved capacity systems.



**Keywords:** Flood Analysis & Protection, Aerial Surveying, LiDAR Technology, Climate Change

# Agri-Village Flood and Drainage Improvement Project

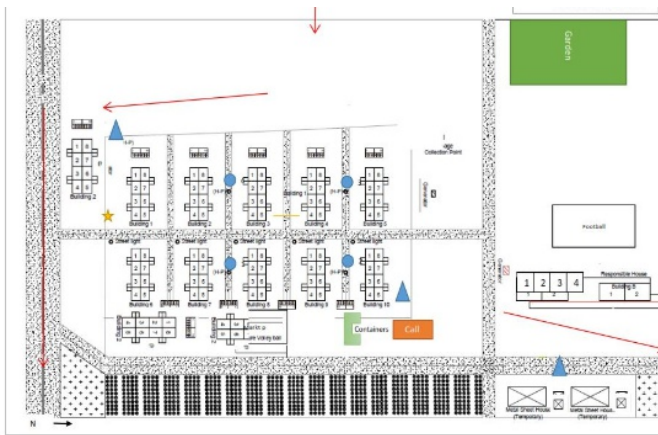
**Location:** Mondulkiri, Cambodia

**Year:** 2024

**Client:** Private

We were approached by an agricultural company that has established eight (8) villages for its workers and their families in Mondulkiri. The villages are home to 2,000+ people and were finding that the rapid growth led to drainage and water management issues.

JEB was hired to determine the cause of the issues and to produce a plan for rehabilitation. To do so, we sent a team to conduct site audits, topographic surveys, and to identify drainage, sewerage, and water supply issues. From our on-site studies, we produced a report outlining the issues faced, the causes, rehabilitative / improvement measures and concept design drawings.



**Keywords:** Site Investigations, Sustainability, Water Resources, Concept Design



## Other Notable Projects:

- Factory Flood Protection Concept Design, Bavet, Cambodia, 2024
- Takeo Safe Water Supply: Technical Support, Takeo, Cambodia, 2024
- Infrastructure Study For KMH Park, Phnom Penh, Cambodia, 2022
- Bakheng WTP: Bathymetric And Current Survey Of Water Intake, Phnom Penh, Cambodia, 2023
- Prek Pnov Launching Shaft: Hydrographic Survey, Phnom Penh, Cambodia, 2024
- Bakheng Wtp Of Water Intake: Hydrographic Survey, Phnom Penh, Cambodia, 2024
- Bathymetric Survey For Koh Norea Replacement Intake, Phnom Penh, Cambodia, 2024
- Prek Ho Factory Drainage, Phnom Penh, Cambodia, 2025



# Our Survey Projects

## Pursat Dam Flood Risk - 2030 Ha LiDAR Survey

**Location:** Pursat, Cambodia

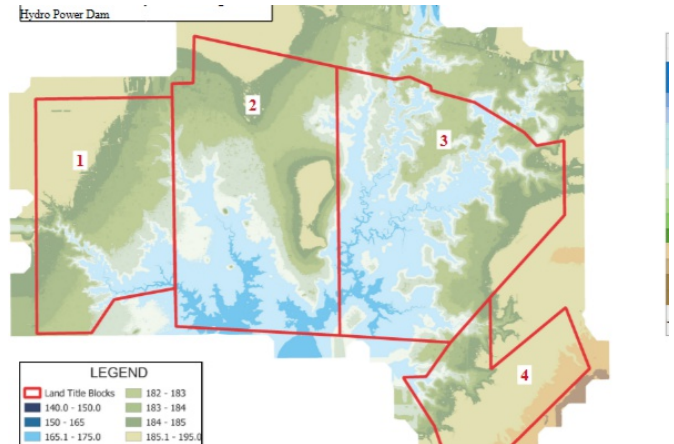
**Year:** 2022

**Client:** Private

A private company approached JEB to assess the flood impact of a nearby dam under construction.

The project site consisted of an area measuring approximately 2,030+ hectares with generally flat and heavily vegetated terrain. Due to the size of the survey area, we conducted an aerial LiDAR and photogrammetric survey rather than employ traditional survey methods.

LiDAR is fast and the laser returns guarantee ground points even in dense vegetation. The survey field-work took five days to complete and had full ground coverage. The processed data was used to produce digital models of the land and detailed maps depicting contours, flood risk areas, and volumetric calculations.



**Keywords:** Flood Analysis, Aerial Surveying, LiDAR, Climate Change

## Angkor Wat Complex - LiDAR and Photogrammetric Surveys

**Location:** Siem Reap, Cambodia

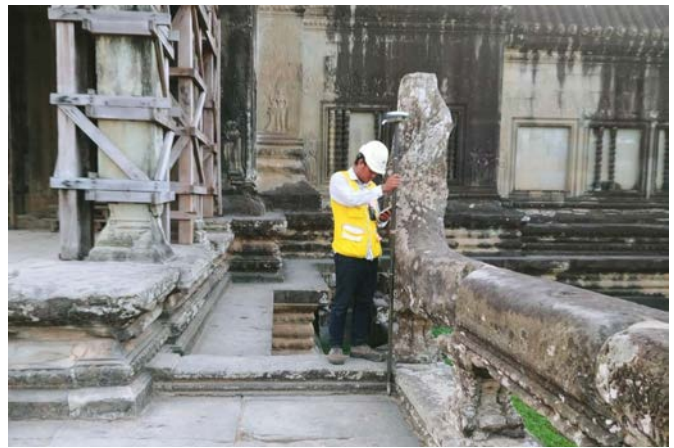
**Year:** 2022

**Client:** EFEO, Apsara National Authority

JEB carried out a highly sensitive and complex topographic survey of several temples in the Angkor Temple Complex. The survey was performed with the École Française d'Extrême-Orient (EFEO) under the authority of the Cambodian Government and the Apsara National Authority.

We conducted LiDAR and Photogrammetric surveys at Angkor Wat, Ta Som, and Banteay Daek, among others. The surveys were conducted to further non-intrusive archaeological research in the temple complex. LiDAR is able to reveal man-made landscapes and earthworks that are not clearly visible on the ground.

The final results of the survey were digital models of the terrain and temples clearly showing several areas for local archaeologists to target for further investigations.



**Keywords:** *Archaeology, Remote Sensing, LiDAR, Digital Terrain Models, Topographic Survey*

# Quarry, Mine, Coal, and Other Material Stockpile Surveys

**Location:** Cambodia

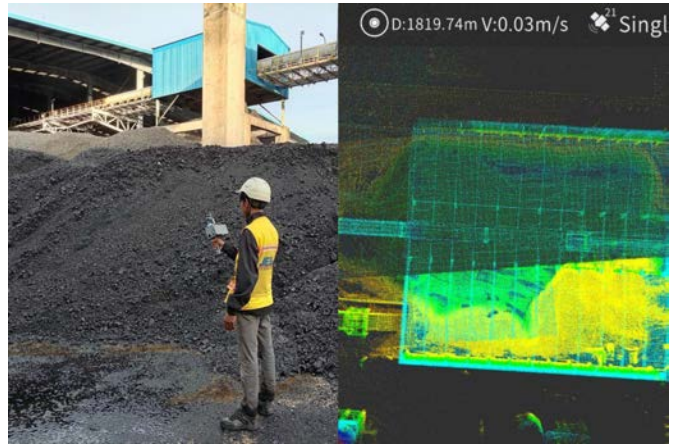
**Year:** 2024 - 2026

**Client:** Private

JEB routinely conducts surveys for mining and quarrying companies using aerial photogrammetry and SLAM scanning.

This project is a routine project the consists of surveying 30+ stockpiles of various earth materials. To produce the final calculations and results, we also take samples of each stockpile for bulk density laboratory testing.

For uncovered stockpiles we use our M300 RTK drone and Zenmuse P1 camera to produce digital models and perform volumetric calculations. We also conduct Total Station surveys in coordination with client teams to provide an additional verification of the survey results. For covered stockpiles, we employ a similar methodology but conduct the survey using our handheld SLAM scanner.



**Keywords:** Mining and Quarries, Remote Sensing, Volumetric Calculations, Topographic Survey

## 5,260 Ha Archaeological Survey by LiDAR and Photogrammetry

**Location:** Kandal, Cambodia

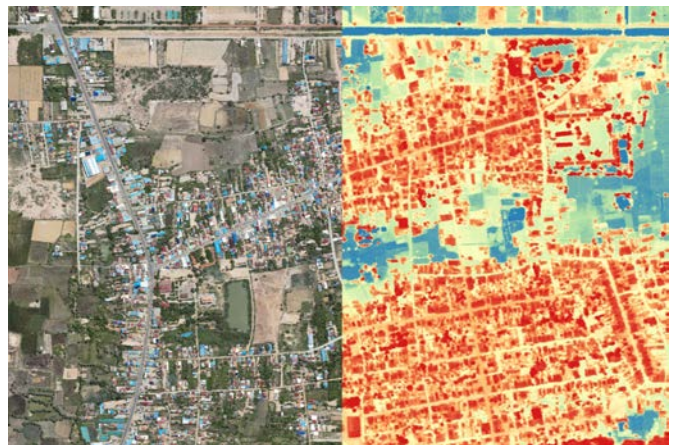
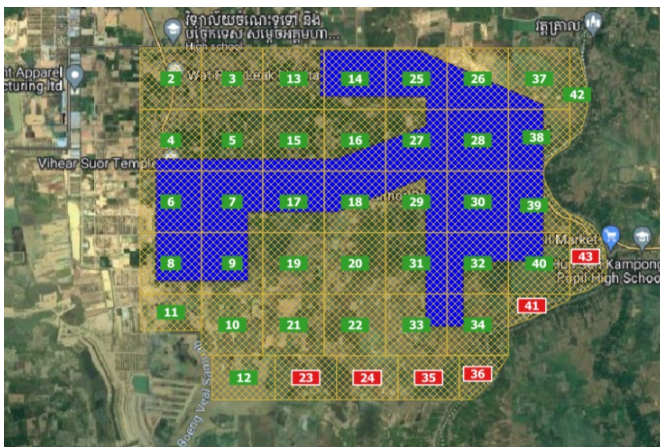
**Year:** 2023

**Client:** Flinders University

JEB carried out a large scale archaeological topographic survey of a 5,260 hectare area in Kandal province, Cambodia. The survey area was mix of rural and urban areas and were conducted in collaboration with local officials.

The surveys were performed to further non-intrusive archaeological research in the area due to the discovery of ancient settlements, temples, and artifacts. LiDAR is able to reveal man-made features and earthworks that are not clearly visible from the ground.

The final results of the survey were digital models of the terrain clearly showing several areas for international and local archaeologists to target for further investigations.



**Keywords:** Archaeology, Remote Sensing, LiDAR, Digital Terrain Models, Topographic Survey

## Krousar Thmey Siem Reap Compound Survey

**Location:** Siem Reap, Cambodia

**Year:** 2025

**Client:** Krousar Thmey

---

JEB was approached by one of the longest standing NGOs in the Kingdom to help them prepare for renovations of a facility in Siem Reap. The site was complex due to the amount of buildings, vegetation, and water features (wells, pipes, pools, etc.). We conducted topographic surveys by drone, total station, SLAM scanner, and excavation + ground penetrating radar (GPR) to map the terrain, building footprints, and underground features: foundations and piping.



**Keywords:** *Topographic Survey, Remote Sensing, Underground Survey*

## EREN Solar Farm Inverter Levels Survey

**Location:** Battambang, Cambodia

**Year:** 2024

**Client:** Comin Khmer

---

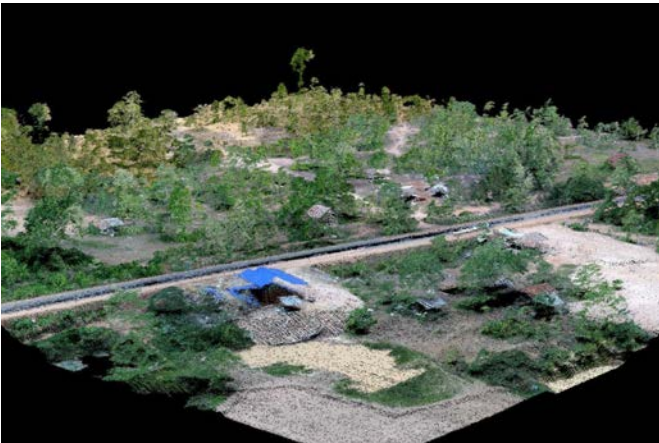
JEB was engaged to perform an as-built verticality and level verification at the Eren Solar Farm in Battambang. We surveyed the inverter foundations and structural mounting levels to ensure alignment with the original design specifications. This solar farm generates roughly 115 GWh per year and is a key part of Cambodia's energy strategy.



**Keywords:** *Energy, Topographic Survey, As-Built, Verification*

## Other Notable Projects:

- Kep National Park Lidar and Photogrammetric Survey, Kep, Cambodia, 2023
- National Pediatric Hospital Survey, Phnom Penh, Cambodia, 2024
- Coal Stockpile Surveys, Sihanoukville, Cambodia, 2024 - 2026
- Archaeological Survey in Remote Northern Mountains, Preah Vihear, Cambodia, 2023
- Bokor Mountain LiDAR Survey, Kampot, Cambodia, 2023
- Photogrammetric Survey and Earthworks Design, Takeo, Cambodia, 2020
- Raffles Hotel Le Royal Ballroom Survey, Phnom Penh, Cambodia, 2023
- 1,500 Hectare LiDAR Wetlands Survey, Kandal, Cambodia, 2025



# Our Structural Projects

## 752kW Roof-Mounted Solar Installation for a Garment Factory

**Location:** Phnom Penh, Cambodia

**Year:** 2023

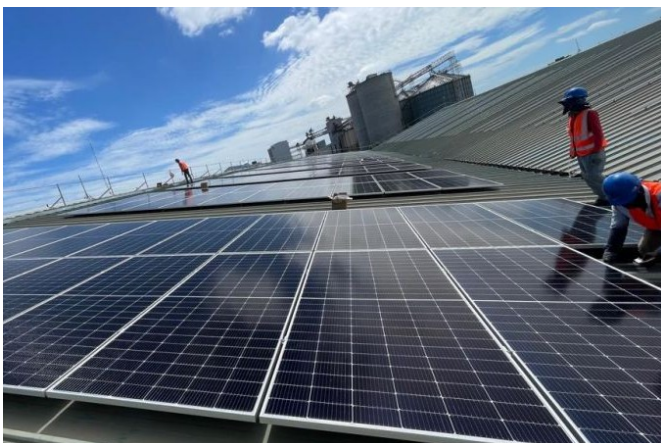
**Client:** Private

---

At the request of TotalEnergies Renewables, JEB performed a structural survey and assessment and the complete structural analysis of the roof and load-bearing members of a garment factory in Phnom Penh. The project objective was to determine if the factory structure had the capacity to support the additional load of roof-mounted solar panels.

Following the fieldwork and in-office analysis, it was determined that the factory required structural strengthening works in order to support the added load of roof-mounted solar panels. Structural strengthening design using steel structural tension rods was developed and accepted. Working with PESTECH, we implemented the structural reinforcement and strengthening works.

Finally, 752kW of solar panels were installed on the roof of the factory.



**Keywords:** *Energy, Structural Assessment and Analysis, Structural Strengthening Design, Construction Management*

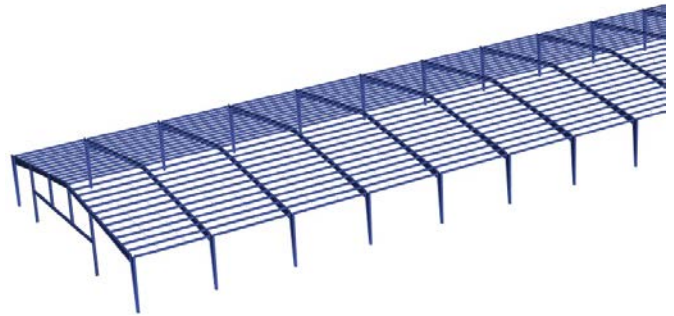
## RMA Ford Sub-Assembly Plant Structural Assessment And Analysis

**Location:** Pursat, Cambodia

**Year:** 2025

**Client:** Comin Khmer | RMA Automotive Cambodia

At the request of RMA, JEB performed a structural survey and assessment and the complete structural analysis of the roof and load-bearing members of the automotive factory to determine if the factory structure had the capacity to support the additional load of roof-mounted solar panels. Following the fieldwork and in-office analysis, a structural strengthening design was produced as the factory required



**Keywords:** *Structural Assessment, Structural Analysis, Strengthening Design, Solar Panel*

## Full Scope Structural Studies for Six Senses Resort

**Location:** Sihanoukville, Cambodia

**Year:** 2026 - Ongoing

**Client:** Six Senses Resort

JEB was requested to conduct complete structural investigations of several buildings across the island. The buildings were surveyed and assessed and the data was used to produce structural modeling and analyses. Rehabilitative measures and strengthening designs were produced and submitted. Construction supervision of the rehabilitative and strengthening measures will be launched in mid 2026.



**Keywords:** *As-Built Surveys, Structural Assessment, Foundation Investigations, Structural Analysis, Strengthening Design*

## Sunwah Pearl

**Location:** Phnom Penh, Cambodia

**Year:** 2023

**Client:** Bauer Cambodia

---

In support of the development of the Sunwah Pearl tower (2,400 luxury apartments, 18-storey office tower, five-star hotel, large-scale shopping centre, private club, viewing platforms, swimming pools, gyms, and car parks), JEB embedded survey teams with the developer's construction teams to verify the construction of the massive foundations.



**Keywords:** *Structural Assessment, Structural Analysis, Strengthening Design*

## Four Floor Private Villa Renovation

**Location:** Phnom Penh, Cambodia

**Year:** 2024

**Client:** Northcroft Asia

---

Our client was preparing to conduct a complete renovation and retrofitting of an older four story villa and needed to produce as-built drawings and verify the strength of the structure. Following the structural analysis, strengthening design to ensure the stability, safety, and longevity of the building was produced.



**Keywords:** *Structural Assessment, Structural Analysis, Strengthening Design*

## Other Notable Projects:

- TotalEnergies Pochentong Station Structural Analysis for Rooftop Solar, Phnom Penh, Cambodia, 2026
- Zuellig Pharma Head Office Roof Assessment and Analysis, Phnom Penh, Cambodia, 2025
- Structural Analysis for the British Embassy Rooftop Antenna, Phnom Penh, Cambodia, 2024
- Structural Analysis of Storefronts at The Bridge Mall Koh Pich, Phnom Penh, Cambodia, 2025
- PPWSA Structural Analysis of the Offices and Storage Room, Phnom Penh, Cambodia, 2025
- Bakheng WTP Structural Analysis for Solar Mount, Phnom Penh, Cambodia, 2026
- Grace Glory Factory Structural Assessment and Analysis for Solar Roof, Phnom Penh, Cambodia, 2025
- Structural Analysis for The Giving Tree International School Expansion, Phnom Penh, Cambodia, 2025
- Structural Analysis and Design Improvement Of An Inverter Room, Phnom Penh, Cambodia, 2026
- Structural Analysis for a 16 Floor Building in Phnom Penh, Cambodia, Phnom Penh, Cambodia, 2025
- Reliable Garment Factory Structural Analysis for Solar Roof, Phnom Penh, Cambodia, 2025



# Company Information



**ក្រសួងពាណិជ្ជកម្ម**  
MINISTRY OF COMMERCE

៧១៩(No) MOC-49135621 ព.ណ. ច.ប.ព

## វិញ្ញាបនបត្រ

បញ្ជាក់ការចុះឈ្មោះក្នុងបញ្ជីពាណិជ្ជកម្ម

### CERTIFICATE OF INCORPORATION

ព្រះរាជាណាចក្រកម្ពុជា  
ជាតិ សាសនា ព្រះមហាក្សត្រ

KINGDOM OF CAMBODIA  
NATION RELIGION KING

នាមករណ៍	: <b>ជេប ស៊ែវ អេន អេនជីនារី ឯ.ក</b>	
NAME	: JEB SURVEYS AND ENGINEERING CO., LTD.	
ចុះបញ្ជីក្រោមលេខ	: 00033571	
REGISTRATION NUMBER	: 00033571	
កាលបរិច្ឆេទចុះក្នុងបញ្ជីពាណិជ្ជកម្ម	: 25 ឧសភា 2018	
INCORPORATION DATE	: 25 May 2018	
ប្រភេទទទួលស្គាល់ថាជា	: ក្រុមហ៊ុនឯកជនទទួលខុសត្រូវមានកម្រិត	
IS INCORPORATED AS	: Private Limited Company	

ស្ថិតក្រោមបទបញ្ញត្តិនៃច្បាប់ស្តីពីវិន័យពាណិជ្ជកម្មនិងបញ្ជីពាណិជ្ជកម្ម ច្បាប់ស្តីពីសហគ្រាសពាណិជ្ជកម្ម ក្រមរដ្ឋប្បវេណី និងក្រមព្រហ្មទណ្ឌ ដែលមានជាធរមាននៃព្រះរាជាណាចក្រកម្ពុជា។

UNDER THE REGULATIONS OF COMMERCIAL RULES AND REGISTER LAW, COMMERCIAL ENTERPRISES LAW, CIVIL CODE AND PENAL CODE OF THE KINGDOM OF CAMBODIA



ភ្នំពេញ, 25 ឧសភា 2018  
PHNOM PENH, 25 MAY 2018

**ឧ រដ្ឋមន្ត្រីក្រសួងពាណិជ្ជកម្ម**  
F. MINISTER OF COMMERCE

**កែវ កោសល**  
KAO KOSAL  
Director General

**ក្រសួងរៀបចំដែនដី នគរូបនីយកម្ម និងសំណង់**  
Ministry of Land Management, Urban Planning and Construction

លេខ(N.): ០២២ ប្រ. មនស/អសណ



## វិញ្ញាបនបត្របញ្ជាក់ការអនុញ្ញាតឱ្យប្រកបអាជីវកម្ម

### CERTIFICATE OF LICENSE

ព្រះរាជាណាចក្រកម្ពុជា  
KINGDOM OF CAMBODIA  
ជាតិ សាសនា ព្រះមហាក្សត្រ  
Nation Religion King

នាមករណ៍: <b>ក្រុមហ៊ុន ជេប ស៊ែវ អេន អេនជីនារី ឯ.ក</b>	Name : JEB SURVEYS AND ENGINEERING Co., Ltd.
លេខបញ្ជី: <b>០៩៦នសគប / ២០២២</b> កាលបរិច្ឆេទចុះបញ្ជី: <b>១៦ ធ្នូ ២០២០</b>	Registration Number : 096 NSKB /20SB Registration Date : 16 December 2020
អាជីវកម្ម: <b>សិក្សាគម្រោងប្លង់</b> ប្រភេទទី: <b>៣</b>	Type of Business : Project Design Class : 3
សុពលភាព: ពីថ្ងៃទី <b>២៣</b> ខែ <b>មករា</b> ឆ្នាំ <b>២០២៤</b> ដល់ថ្ងៃទី <b>២៣</b> ខែ <b>មករា</b> ឆ្នាំ <b>២០២៧</b>	Validity : 23 January 2024 To 23 January 2027

អ្នកកាន់វិញ្ញាបនបត្រនេះ ត្រូវគោរពច្បាប់ និងបទបញ្ជាជាធរមាននៃ ព្រះរាជាណាចក្រកម្ពុជា។

The Licensee shall observe and comply with Laws, Rules and Regulations of the Kingdom of Cambodia.

ថ្ងៃ ចេញ: **២៣** ខែ **មករា** ឆ្នាំ **២០២៤**  
Phnom Penh, Date: 23 January 2024

**កែវ កោសល**  
Minister

**ព្រះរាជាណាចក្រកម្ពុជា**  
ROYAL KINGDOM OF CAMBODIA  
ជាតិ សាសនា ព្រះមហាក្សត្រ  
NATION RELIGION KING

**ក្រសួងសេដ្ឋកិច្ច និងហិរញ្ញវត្ថុ**  
MINISTRY OF ECONOMY AND FINANCE  
**អគ្គនាយកដ្ឋានពន្ធដារ**  
GENERAL DEPARTMENT OF TAXATION  
លេខ: N°PTM26010976518 អណ



**ប័ណ្ណពន្ធដារ លេខ ២០២៦**  
អ្នកជាប់ពន្ធប្រាក់

ឈ្មោះសហគ្រាស: **ជេប ស៊ីវ ធាន ធានជីវិត ឯ.ក**  
លេខអត្តសញ្ញាណកម្មសហគ្រាស: K003-901802689  
តុល្យប្រាក់: អន្តរជាតិ  
ប្រភេទសហគ្រាស: ក្រុមហ៊ុនឯកជនទទួលសុវត្ថិភាព  
សកម្មភាពអាជីវកម្ម: រោងចក្រផ្តល់សេវាប្រឹក្សាស្ត្រ  
អាសយដ្ឋានសហគ្រាស: ៣៧៦ ផ្លូវលេខ ៦ សង្កាត់ចតុមុខ ខណ្ឌដូនពេញ រាជធានីភ្នំពេញ  
ឈ្មោះម្ចាស់សហគ្រាស: **ហ៊ឿង ច័ន្ទរិក្ស** សញ្ជាតិ: ខ្មែរ

**PATENT TAX 2026**  
Medium Taxpayer

Enterprise's name: **JEB SURVEYS AND ENGINEERING CO., LTD.**  
Tax Identification Number (TIN): K003-901802689  
Registered at: General Department of Taxation Under: Doun Penh Tax Branch  
Main business activity(ies): Architectural consultation service  
Forms of business: Private limited company  
Owner's name: **PHEANG CHANPHIROM** Nationality: Cambodian

ទឹកប្រាក់ពន្ធដារ: ២០២៦  
**១.២០០.០០០ រៀល**

លេខ: SN: EACL260109170280654



អគ្គនាយកដ្ឋានពន្ធដារ  
General Department of Taxation

កាលបរិច្ឆេទ: ០៩ ខែ មេសា ឆ្នាំ ២០២៦  
Phnom Penh, 09 January 2026.




បញ្ជាក់: ប័ណ្ណពន្ធដារនេះ ត្រូវដាក់តាំង ឬ បង្ហាញ ទៅអ្នកផ្តល់ប្រាក់កម្ចី។  
Note: This patent tax must be hanged or displayed at the company's office.

**ព្រះរាជាណាចក្រកម្ពុជា**  
ROYAL KINGDOM OF CAMBODIA  
ជាតិ សាសនា ព្រះមហាក្សត្រ  
NATION RELIGION KING

**ក្រសួងសេដ្ឋកិច្ច និងហិរញ្ញវត្ថុ**  
MINISTRY OF ECONOMY AND FINANCE  
**អគ្គនាយកដ្ឋានពន្ធដារ**  
GENERAL DEPARTMENT OF TAXATION  
លេខ: N°PTM26010976487 អណ



**ប័ណ្ណពន្ធដារ លេខ ២០២៦**  
អ្នកជាប់ពន្ធប្រាក់

ឈ្មោះសហគ្រាស: **ជេប ស៊ីវ ធាន ធានជីវិត ឯ.ក**  
លេខអត្តសញ្ញាណកម្មសហគ្រាស: K003-901802689  
តុល្យប្រាក់: អន្តរជាតិ  
ប្រភេទសហគ្រាស: ក្រុមហ៊ុនឯកជនទទួលសុវត្ថិភាព  
សកម្មភាពអាជីវកម្ម: ការសាងសង់ ប្រព័ន្ធស្រោចស្រព ផ្លូវ រោងចក្រ និង ប្រព័ន្ធស្រោចស្រព  
អាសយដ្ឋានសហគ្រាស: ៣៧៦ ផ្លូវលេខ ៦ សង្កាត់ចតុមុខ ខណ្ឌដូនពេញ រាជធានីភ្នំពេញ  
ឈ្មោះម្ចាស់សហគ្រាស: **ហ៊ឿង ច័ន្ទរិក្ស** សញ្ជាតិ: ខ្មែរ

**PATENT TAX 2026**  
Medium Taxpayer

Enterprise's name: **JEB SURVEYS AND ENGINEERING CO., LTD.**  
Tax Identification Number (TIN): K003-901802689  
Registered at: General Department of Taxation Under: Doun Penh Tax Branch  
Additional business activity(ies): Construction (building, bridge, road, drainage and riverbank)  
Forms of business: Private limited company  
Owner's name: **PHEANG CHANPHIROM** Nationality: Cambodian

ទឹកប្រាក់ពន្ធដារ: ២០២៦  
**១.២០០.០០០ រៀល**

លេខ: SN: EACL260109170280653



អគ្គនាយកដ្ឋានពន្ធដារ  
General Department of Taxation

កាលបរិច្ឆេទ: ០៩ ខែ មេសា ឆ្នាំ ២០២៦  
Phnom Penh, 09 January 2026.




បញ្ជាក់: ប័ណ្ណពន្ធដារនេះ ត្រូវដាក់តាំង ឬ បង្ហាញ ទៅអ្នកផ្តល់ប្រាក់កម្ចី។  
Note: This patent tax must be hanged or displayed at the company's office.

**ព្រះរាជាណាចក្រកម្ពុជា**  
ROYAL KINGDOM OF CAMBODIA  
ជាតិ សាសនា ព្រះមហាក្សត្រ  
NATION RELIGION KING

**ក្រសួងពលកម្ម និងបណ្តុះបណ្តាលវិជ្ជាជីវៈ**  
MINISTRY OF LABOUR AND VOCATIONAL TRAINING  
BOARD OF ENGINEERS, CAMBODIA

**វិស្វកម្មស្រាវជ្រាវ**  
PROFESSIONAL ENGINEER  
អង្គការសមាជិកវិស្វកម្មស្រាវជ្រាវ  
THE SECRETARY GENERAL OF THE BOARD OF ENGINEERS, CAMBODIA

បានបញ្ជាក់សម្រេចថ្ងៃទី: ៣១ ខែ មេសា ឆ្នាំ ២០២៤  
Having approved minutes date: 31 May 2024

ឈ្មោះ: **ហ៊ឿង ច័ន្ទរិក្ស** ភេទ: ប្រុស  
Name: **PHEANG CHANPHIROM** Sex: Male

ថ្ងៃខែឆ្នាំកំណើត: ១៣ ខែ មេសា ឆ្នាំ ១៩៩៥  
Date of Birth: 13 March 1995

បានបញ្ជាក់សម្រេចថ្ងៃទី: ១៣ ខែ មេសា ឆ្នាំ ២០២៤  
Having fulfilled all the requirements of the Board of Engineers, Cambodia for the award of the title of PROFESSIONAL ENGINEER

សញ្ជាតិ: ខ្មែរ  
Nationality: Cambodian

លេខប័ណ្ណ: ០១០០២៩ អណ  
ID: 000029 PH

កាលបរិច្ឆេទ: ០៩ ខែ មេសា ឆ្នាំ ២០២៤  
Phnom Penh: 09 June 2024

**សុឡុប វិជ្ជាជីវៈ**  
Secretary General

**ព្រះរាជាណាចក្រកម្ពុជា**  
ROYAL KINGDOM OF CAMBODIA  
ជាតិ សាសនា ព្រះមហាក្សត្រ  
NATION RELIGION KING

**ក្រសួងពលកម្ម និងបណ្តុះបណ្តាលវិជ្ជាជីវៈ**  
MINISTRY OF LABOUR AND VOCATIONAL TRAINING  
BOARD OF ENGINEERS, CAMBODIA

**វិស្វកម្មស្រាវជ្រាវ**  
PROFESSIONAL ENGINEER  
អង្គការសមាជិកវិស្វកម្មស្រាវជ្រាវ  
THE SECRETARY GENERAL OF THE BOARD OF ENGINEERS, CAMBODIA

បានបញ្ជាក់សម្រេចថ្ងៃទី: ៣១ ខែ មេសា ឆ្នាំ ២០២៤  
Having approved minutes date: 31 May 2024

ឈ្មោះ: **ស៊ុន ច័ន្ទរិក្ស** ភេទ: ប្រុស  
Name: **SUN CHANPHIROM** Sex: Male

ថ្ងៃខែឆ្នាំកំណើត: ០៣ ខែ មេសា ឆ្នាំ ១៩៩៥  
Date of Birth: 03 May 1995

បានបញ្ជាក់សម្រេចថ្ងៃទី: ៣១ ខែ មេសា ឆ្នាំ ២០២៤  
Having fulfilled all the requirements of the Board of Engineers, Cambodia for the award of the title of PROFESSIONAL ENGINEER

សញ្ជាតិ: ខ្មែរ  
Nationality: Cambodian

លេខប័ណ្ណ: ០១០០២៩ អណ  
ID: 000029 PH

កាលបរិច្ឆេទ: ០៩ ខែ មេសា ឆ្នាំ ២០២៤  
Phnom Penh: 09 June 2024

**សុឡុប វិជ្ជាជីវៈ**  
Secretary General

**ព្រះរាជាណាចក្រកម្ពុជា**  
ROYAL KINGDOM OF CAMBODIA  
ជាតិ សាសនា ព្រះមហាក្សត្រ  
NATION RELIGION KING

**ក្រសួងពលកម្ម និងបណ្តុះបណ្តាលវិជ្ជាជីវៈ**  
MINISTRY OF LABOUR AND VOCATIONAL TRAINING  
BOARD OF ENGINEERS, CAMBODIA

**វិញ្ញាបនបត្រវិស្វកម្មស្រាវជ្រាវ**  
CERTIFICATE OF REGISTERED ENGINEER  
អង្គការសមាជិកវិញ្ញាបនបត្រវិស្វកម្មស្រាវជ្រាវ  
THE SECRETARY GENERAL OF THE BOARD OF ENGINEERS, CAMBODIA

បានបញ្ជាក់សម្រេចថ្ងៃទី: ១៤ ខែ មេសា ឆ្នាំ ២០២៤  
Having approved minutes date: 14 January 2024

ឈ្មោះ: **លុយ ផាន់ធីន** ភេទ: ប្រុស  
Name: **LAY PHANATHIN** Sex: Male

ថ្ងៃខែឆ្នាំកំណើត: ០៥ ខែ កញ្ញា ឆ្នាំ ១៩៩៥  
Date of Birth: 05 September 1995

បានបញ្ជាក់សម្រេចថ្ងៃទី: ១៤ ខែ មេសា ឆ្នាំ ២០២៤  
Having fulfilled all the requirements of the Board of Engineers, Cambodia for the award of the title of REGISTERED ENGINEER

សញ្ជាតិ: ខ្មែរ  
Nationality: Cambodian

លេខប័ណ្ណ: ០១០០២៩ អណ  
ID: 000029 PH

កាលបរិច្ឆេទ: ០៩ ខែ មេសា ឆ្នាំ ២០២៤  
Phnom Penh: 09 June 2024

**សុឡុប វិជ្ជាជីវៈ**  
Secretary General

**ព្រះរាជាណាចក្រកម្ពុជា**  
ROYAL KINGDOM OF CAMBODIA  
ជាតិ សាសនា ព្រះមហាក្សត្រ  
NATION RELIGION KING

**ក្រសួងពលកម្ម និងបណ្តុះបណ្តាលវិជ្ជាជីវៈ**  
MINISTRY OF LABOUR AND VOCATIONAL TRAINING  
BOARD OF ENGINEERS, CAMBODIA

**វិញ្ញាបនបត្រវិស្វកម្មស្រាវជ្រាវ**  
CERTIFICATE OF REGISTERED ENGINEER  
អង្គការសមាជិកវិញ្ញាបនបត្រវិស្វកម្មស្រាវជ្រាវ  
THE SECRETARY GENERAL OF THE BOARD OF ENGINEERS, CAMBODIA

បានបញ្ជាក់សម្រេចថ្ងៃទី: ១៤ ខែ មេសា ឆ្នាំ ២០២៤  
Having approved minutes date: 17 February 2023

ឈ្មោះ: **ហ៊ាន ច័ន្ទរិក្ស** ភេទ: ប្រុស  
Name: **HAN CHANKEHA** Sex: Male

ថ្ងៃខែឆ្នាំកំណើត: ១៣ ខែ កញ្ញា ឆ្នាំ ១៩៩៥  
Date of Birth: 13 August 1995

បានបញ្ជាក់សម្រេចថ្ងៃទី: ១៤ ខែ មេសា ឆ្នាំ ២០២៤  
Having fulfilled all the requirements of the Board of Engineers, Cambodia for the award of the title of REGISTERED ENGINEER

សញ្ជាតិ: ខ្មែរ  
Nationality: Cambodian

លេខប័ណ្ណ: ០១០០២៩ អណ  
ID: 000029 PH

កាលបរិច្ឆេទ: ០៩ ខែ មេសា ឆ្នាំ ២០២៤  
Phnom Penh: 22 February 2023

**សុឡុប វិជ្ជាជីវៈ**  
Secretary General

**ព្រះរាជាណាចក្រកម្ពុជា**  
ROYAL KINGDOM OF CAMBODIA  
ជាតិ សាសនា ព្រះមហាក្សត្រ  
NATION RELIGION KING

**ក្រសួងពលកម្ម និងបណ្តុះបណ្តាលវិជ្ជាជីវៈ**  
MINISTRY OF LABOUR AND VOCATIONAL TRAINING  
BOARD OF ENGINEERS, CAMBODIA

**វិញ្ញាបនបត្រវិស្វកម្មស្រាវជ្រាវ**  
CERTIFICATE OF REGISTERED ENGINEER  
អង្គការសមាជិកវិញ្ញាបនបត្រវិស្វកម្មស្រាវជ្រាវ  
THE SECRETARY GENERAL OF THE BOARD OF ENGINEERS, CAMBODIA

បានបញ្ជាក់សម្រេចថ្ងៃទី: ២២ ខែ មេសា ឆ្នាំ ២០២៤  
Having approved minutes date: 22 May 2024

ឈ្មោះ: **ប្រាក់ រិក្ស** ភេទ: ប្រុស  
Name: **PRAK RIKH** Sex: Male

ថ្ងៃខែឆ្នាំកំណើត: ១៥ ខែ កញ្ញា ឆ្នាំ ១៩៩៥  
Date of Birth: 15 September 1995

បានបញ្ជាក់សម្រេចថ្ងៃទី: ២២ ខែ មេសា ឆ្នាំ ២០២៤  
Having fulfilled all the requirements of the Board of Engineers, Cambodia for the award of the title of REGISTERED ENGINEER

សញ្ជាតិ: ខ្មែរ  
Nationality: Cambodian

លេខប័ណ្ណ: ០១០០២៩ អណ  
ID: 000029 PH

កាលបរិច្ឆេទ: ០៩ ខែ មេសា ឆ្នាំ ២០២៤  
Phnom Penh: 09 June 2024

**សុឡុប វិជ្ជាជីវៈ**  
Secretary General

**JEB** SURVEYS &  
ENGINEERING  

---

**CIVIL ENGINEERING CONSULTANT**

[www.jeb-engineers.com](http://www.jeb-engineers.com)

**Phone:**

+855 17 990 138  
+855 78 447 879

**Email:**

[contact@jeb-engineers.com](mailto:contact@jeb-engineers.com)

**Address:**

3F, California Social House,  
Russian Blvd, Phnom Penh, Cambodia